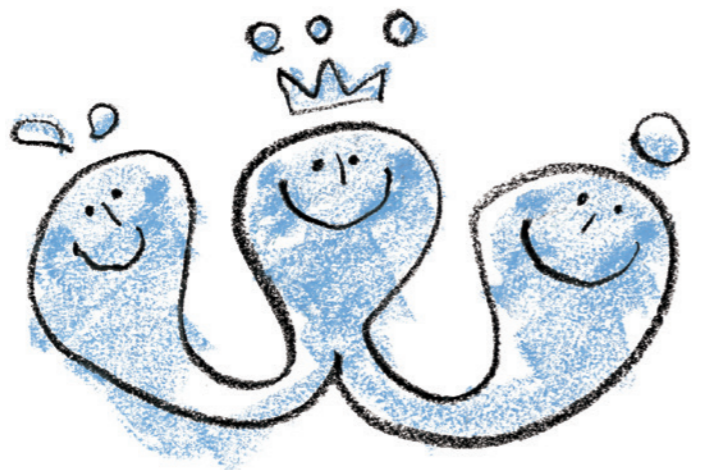




Water Plaza



# Water for Our Future.

Water is not only the source of life for all living forms but also necessary for the development of a society, which needs industrial and agricultural-use water, as well as water for landscapes.

Against a serious global water shortage,

the evolution of a water production process is awaited for a brighter future.

In order to solve global water problems,

Water Plaza provides sustainable advanced solutions for water recycling and reuse,

by applying Japanese cutting-edge technologies having wide experiences.

The Water Plaza was established by an independent administrative institution, the New Energy and Industrial Technology Development Organization(NEDO), with the cooperation of municipalities and in collaboration with the Global Water Recycling and Reuse Solution Technology Research Association (GWSTA).

## Purposes of the Water Plaza

To provide energy-saving and environment-friendly solutions that combine various water resources effectively.

We provide sustainable solutions that can address each region's local characteristics using our technologies of seawater desalination and of sewage and industrial wastewater reclamation.

To showcase the water recycling technologies mainly composed of made-in-Japan proven membranes.

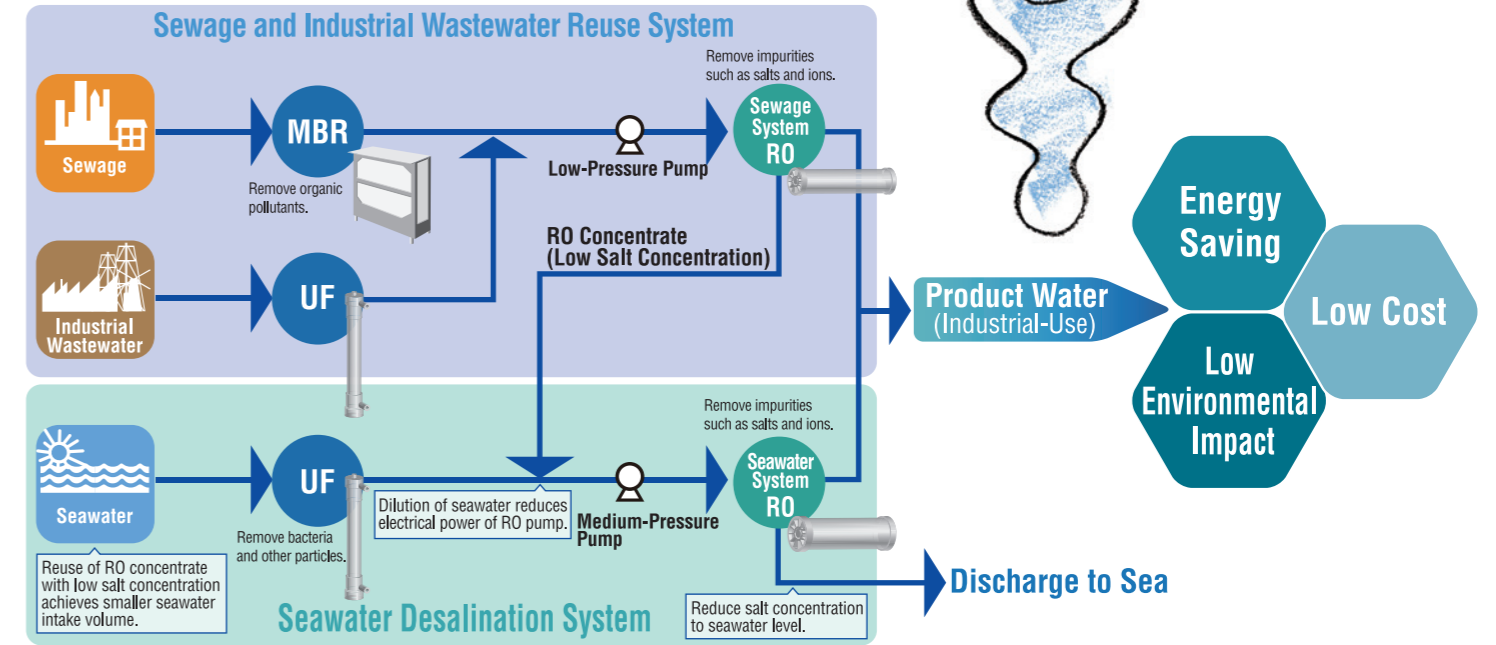
At the demo plants, you can view Japan's outstanding water producing and reclamation technologies such as the membrane technology that has shown proven performance.

To provide the test bed to develop cutting-edge technologies for the effective use of various water resources.

We provide the test bed with several water sources supplied from the demo plant for private corporations and research institutions.

## Effective Use of Various Water Resources

<Typical Flow Diagram>



# Water Plaza Kitakyushu



<The Integrated Seawater Desalination and Sewage Reuse System>

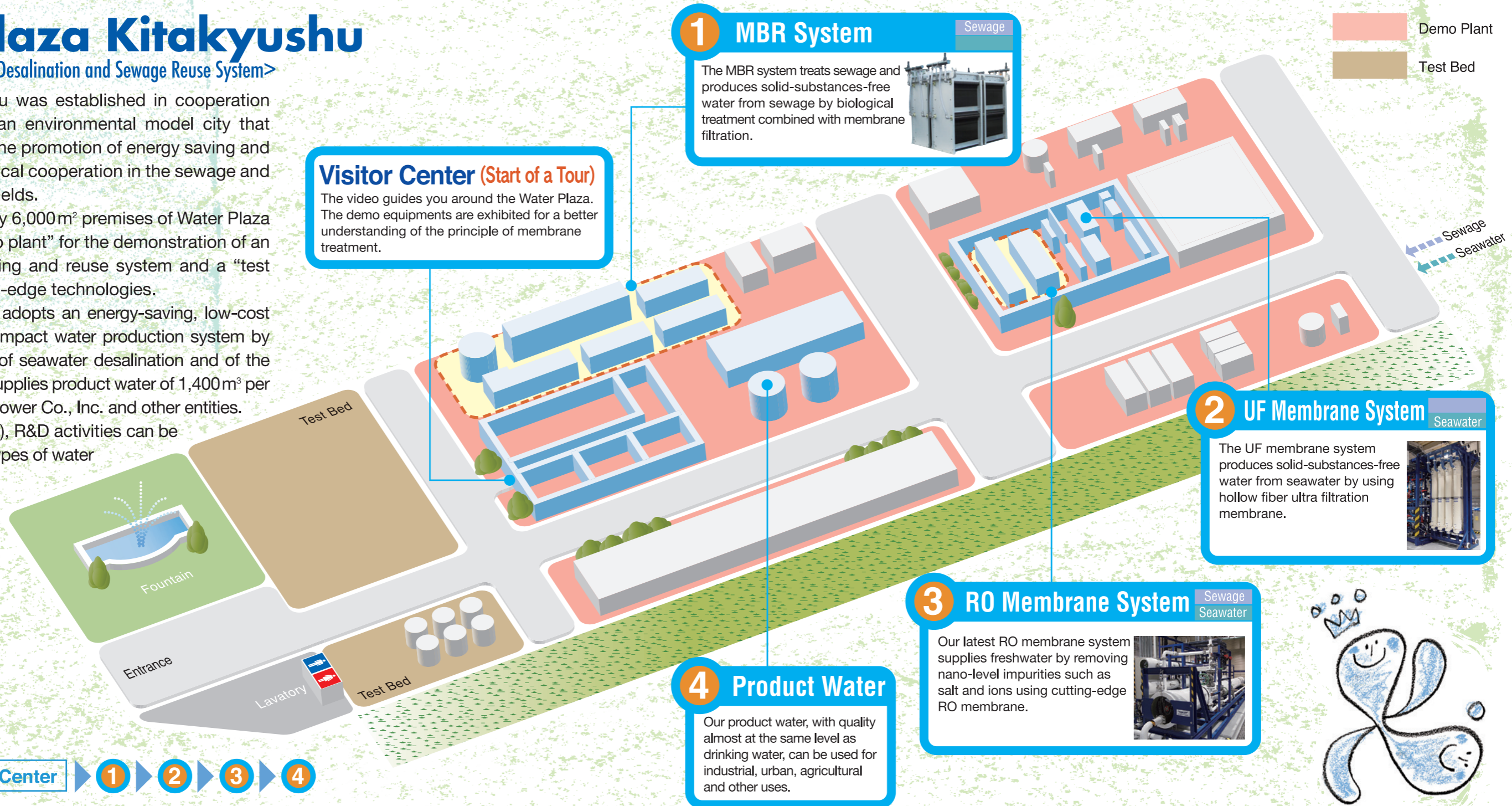
Water Plaza Kitakyushu was established in cooperation with Kitakyushu City, an environmental model city that vigorously engages in the promotion of energy saving and international technological cooperation in the sewage and other water treatment fields.

Inside the approximately 6,000m<sup>2</sup> premises of Water Plaza Kitakyushu lies a “demo plant” for the demonstration of an advanced water recycling and reuse system and a “test bed” to develop cutting-edge technologies.

The demo plant, which adopts an energy-saving, low-cost and low environmental impact water production system by integrating the process of seawater desalination and of the sewage reuse system, supplies product water of 1,400m<sup>3</sup> per day to Kyushu Electric Power Co., Inc. and other entities.


At the test bed (5 zones), R&D activities can be conducted utilizing six types of water from the demo plant.

 Demo Plant  
 Test Bed



**1 MBR System** Sewage

The MBR system treats sewage and produces solid-substances-free water from sewage by biological treatment combined with membrane filtration.




**Visitor Center (Start of a Tour)**

The video guides you around the Water Plaza. The demo equipments are exhibited for a better understanding of the principle of membrane treatment.


**2 UF Membrane System** Seawater

The UF membrane system produces solid-substances-free water from seawater by using hollow fiber ultra filtration membrane.



**3 RO Membrane System** Sewage  
Seawater

Our latest RO membrane system supplies freshwater by removing nano-level impurities such as salt and ions using cutting-edge RO membrane.



**4 Product Water**

Our product water, with quality almost at the same level as drinking water, can be used for industrial, urban, agricultural and other uses.



# Water Plaza Shunan

<The Integrated Sewage and Industrial Wastewater Reuse System>

Water Plaza Shunan was established in cooperation with Shunan City, Yamaguchi, which is located facing the Seto Inland Sea and covers a large-scale industrial belt. Water Plaza Shunan, which has a “demo plant” to treat sewage and industrial wastewater on its approximately 640m<sup>2</sup> premises, supplies product water of 400m<sup>3</sup> per day to Zeon Corporation and other entities.



Tour Route

1

2

3

4

## 3 RO Membrane System

Sewage  
Industrial Wastewater

Our latest RO membrane system supplies freshwater by removing nano-level impurities such as salt and ions using cutting-edge RO membrane.



## 4 Product Water

Our product water, with quality almost at the same level as drinking water, can be used for industrial, urban, agricultural and other uses.

## 1 MBR System

Sewage

The MBR system treats sewage and produces solid- substances-free water from sewage by biological treatment combined with membrane filtration.



## 2 UF Membrane System

Industrial Wastewater

The UF membrane system produces solid- substances-free water from industrial wastewater by using hollow fiber ultra filtration membrane.



Demo Plant

## Water Plaza Kitakyushu

96-1, Nishiminato-machi, Kokurakita-ku, Kitakyushu City, Fukuoka Pref. 803-0801  
c/o Hiagari Sewage Treatment Plant

### ■By car:

5 minutes from the Hiagari IC of the Kitakyushu Urban Expressway-2.  
Water Plaza Kitakyushu has a parking lot for guests.

### ■By train:

JR Kokura Station, 15-minute taxi to the plaza



## Water Plaza Shunan

2225-7, Nachi-cho, Shunan City, Yamaguchi Pref. 745-0023

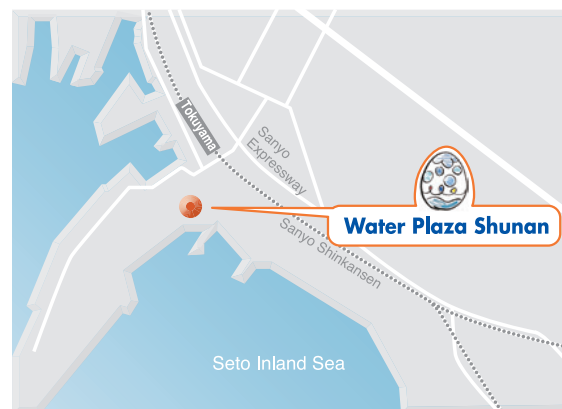
\* The operation ended in  
the end of 2012.

### ■By car:

30 minutes from the Tokuyama-Higashi IC of the Sanyo Expressway

### ■By train:

JR Tokuyama Station, 5-minute taxi to the plaza



### ●For Inquiries

**International Project Division, Water and Sewer Bureau,  
City of Kitakyushu**

1-1, Otemachi, Kokurakita-ku, Kitakyushu City, 803-8510

Phone: +81-93-582-2012 Fax: +81-93-582-2088

URL: <http://www.suidou.city.kitakyushu.lg.jp/waterplaza/>

